

# Barracuda

*Stylish design and proven reliability makes Barracuda our most popular quality banner stand. Barracuda is the most feature-rich single-sided roller banner available and has been specially designed for maximum convenience and ease of use.*



## features & benefits

- Choice of 800 or 1000mm widths
- Available in anodised silver
- Charcoal grey end caps
- Internal graphic housing designed to accommodate graphic media up to 450 microns thick\*
- Secure slide in graphic system
- Ratchet tensioner
- Twist & lock telescopic pole
- Supplied with quality foam padded carry bag

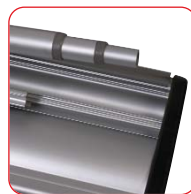
\*Please test your substrate suitability before use



**Universal gripper/  
self-adhesive  
top rail**



**Ratchet  
Tensioner\***



**Integral Pole  
Storage**




**Telescopic Pole  
(Twist & Lock)**



**Slide-in Graphic**

\*Graphic tension may be re-applied or added to by turning the ratchet tensioner clockwise; 6 clicks of the ratchet tensioner equal 1 revolution of the banner stand spring. **(NB Units are supplied pre-tensioned)**

hardware specifications	graphic specifications	additional info
<p>Hardware Dimensions (mm): 2210 max (h) x 855 (w) x 195 (d) approx. 87.00" (h) x 33.66" (w) x 7.68" (d) approx.</p> <p>Base Dimensions (mm): 80 (h) x 855 (w) x 195 (d) approx. 3.15" (h) x 33.66" (w) x 7.68" (d) approx.</p> <p>Weight: 4.5kg (9.92lbs) approx (including carry bag)</p>	<p>Visible Graphic Dimensions (mm): 2130 max (h) x 800 or 1000 (w) 83.85" max (h) x 31.50" or 39.37" (w)</p> <p>750 min (h) x 800 or 1000 (w) 29.53" min (h) x 31.50" or 39.37" (w)</p> <p>Substrate: Add 300mm (12") to base of graphic to allow for roller mechanism Reccomended material thickness 225 - 450 microns (8.86 - 17.72 Mils)</p>	<p>Included in kit: Base, top rail, telescopic pole and carry bag</p> 

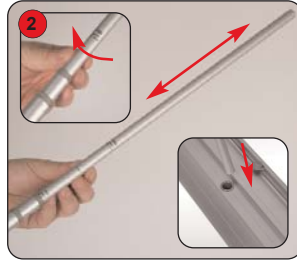
We are continually improving and modifying our product range and reserve the right to vary the specifications without prior notice. All dimensions and weights quoted are approximate and we accept no responsibility for variance. E&OE.

# Assembly Instructions

## Banner stand assembly



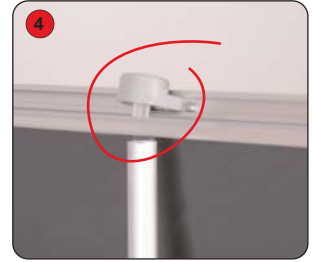
Turn the base over and open the pole retainers. Remove the pole from the base. **Important: Close the pole retainers before using the banner stand.**



Set the telescopic pole to the desired graphic height. **Twist clockwise to lock, anti-clockwise to unlock.** Fit the pole into the base.



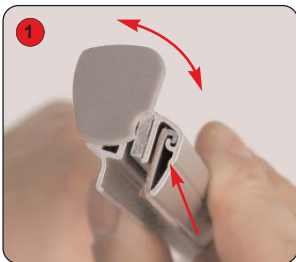
Lift the top rail to raise the graphic from the base. Lean the banner stand backwards and continue to extend the graphic.



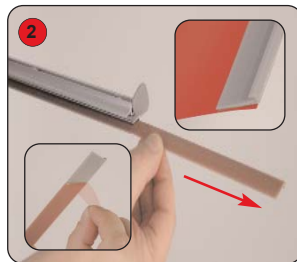
Secure the graphic into position by locating the top rail onto the pole.

**Important: Hold the top rail whilst lowering the banner to prevent damage to the graphic. (do not drop)**

## Graphic attachment - Adhesive rail option



Rotate the rail end cap to expose the plastic adhesive rail insert.

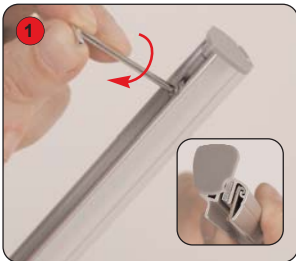


Slide the rail insert from the top rail. Adhere the insert to the **front** of the graphic.

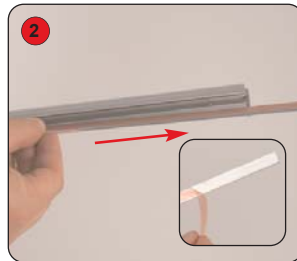


Slide the rail insert and graphic into the top rail. Close the rail end cap.

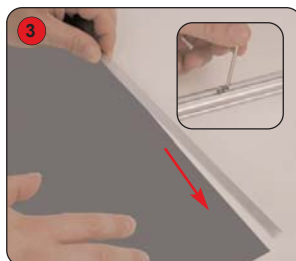
## Graphic attachment - Grippa rail option (ideal for textiles and PVC)



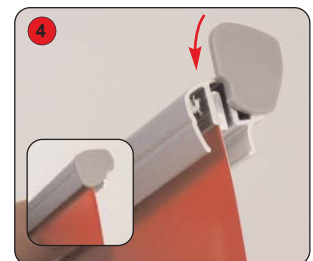
Using the Allen key stored in the base, loosen the top rail screws. Rotate the rail end cap to expose the steel flat bar.



Slide the flat bar from the top rail and remove the backing paper.



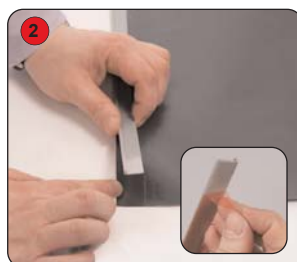
Adhere the flat bar to the **back** of the graphic. Slide the flat bar and graphic into the top rail. Tighten the screws to secure the top rail. Close the rail end cap.



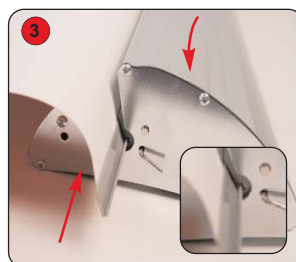
## Graphic attachment - Base



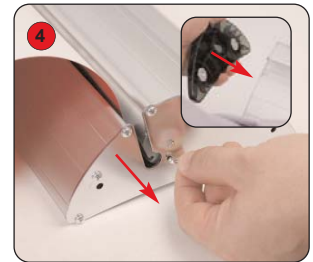
Remove one moulded end cap from the base. Slide the plastic insert from the base.



Adhere the insert to the **back** of the graphic.



Slide the insert and graphic into the base.



Whilst holding the graphic, remove the locking pin from the base and gently allow the graphic to retract. Re-fit the moulded end cap

**WARNING: Always attach graphic to base and top rail before removing the locking pin.**

**After fitting, the graphic should be left for 24 hours before use to ensure the adhesive bonds sufficiently. Opening the cassette may invalidate the product warranty.**